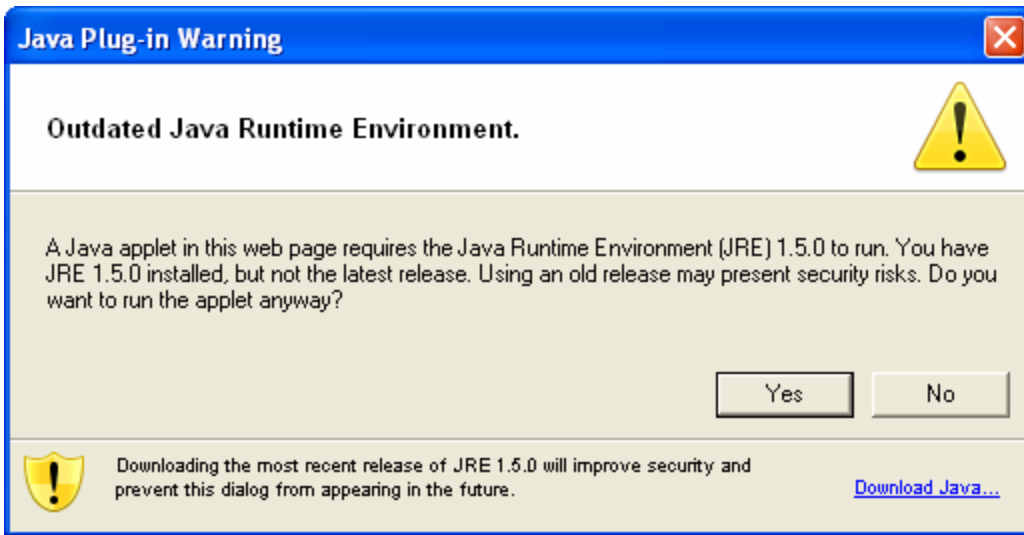


Instructions for Installing Java Update 12

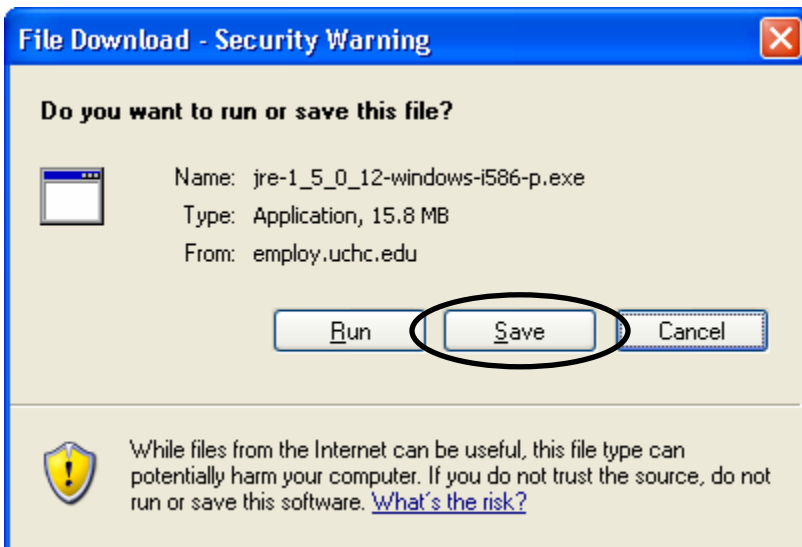
If you receive the message below while attempting to log into Kronos, proceed with the instructions below:



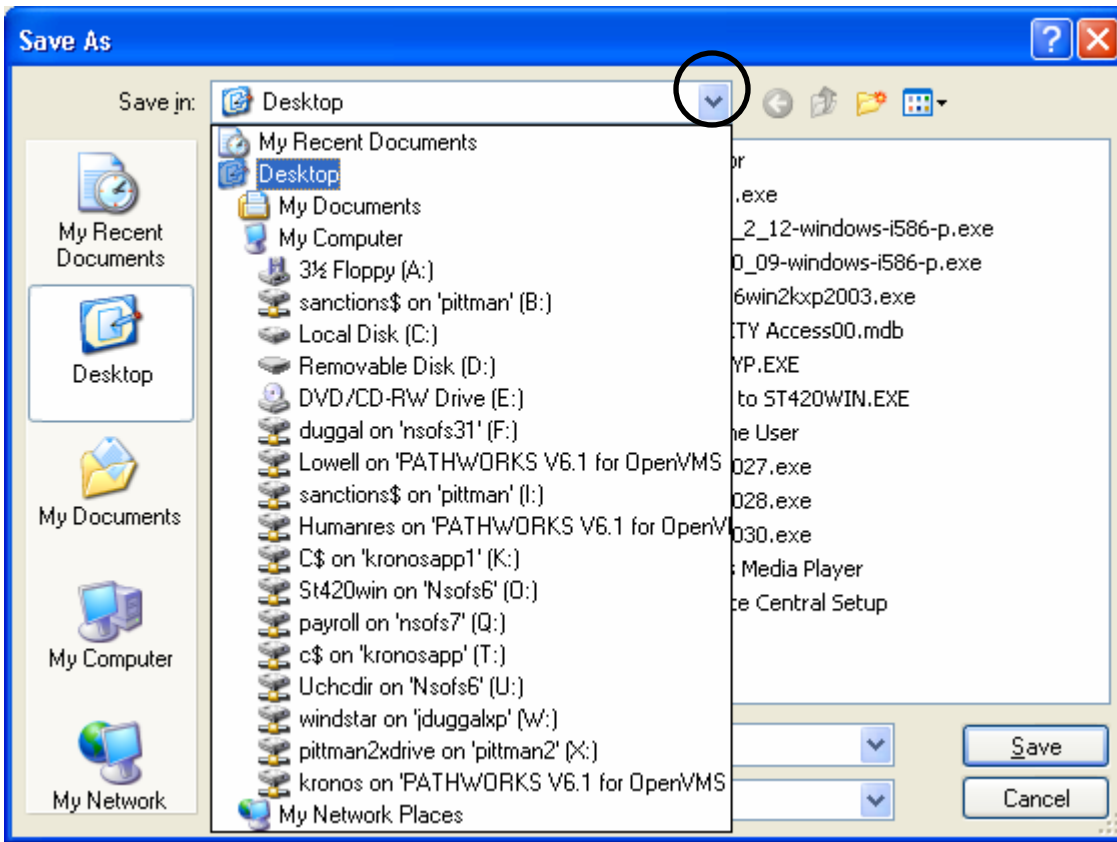
1. Click the following Link:

http://employ.uchc.edu/payroll/pdfs/jre-1_5_0_12-windows-i586-p.exe

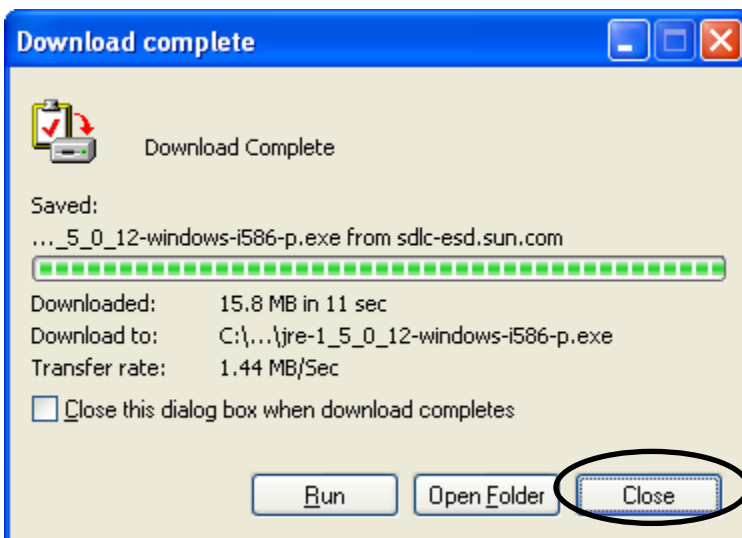
2. Click **Save**



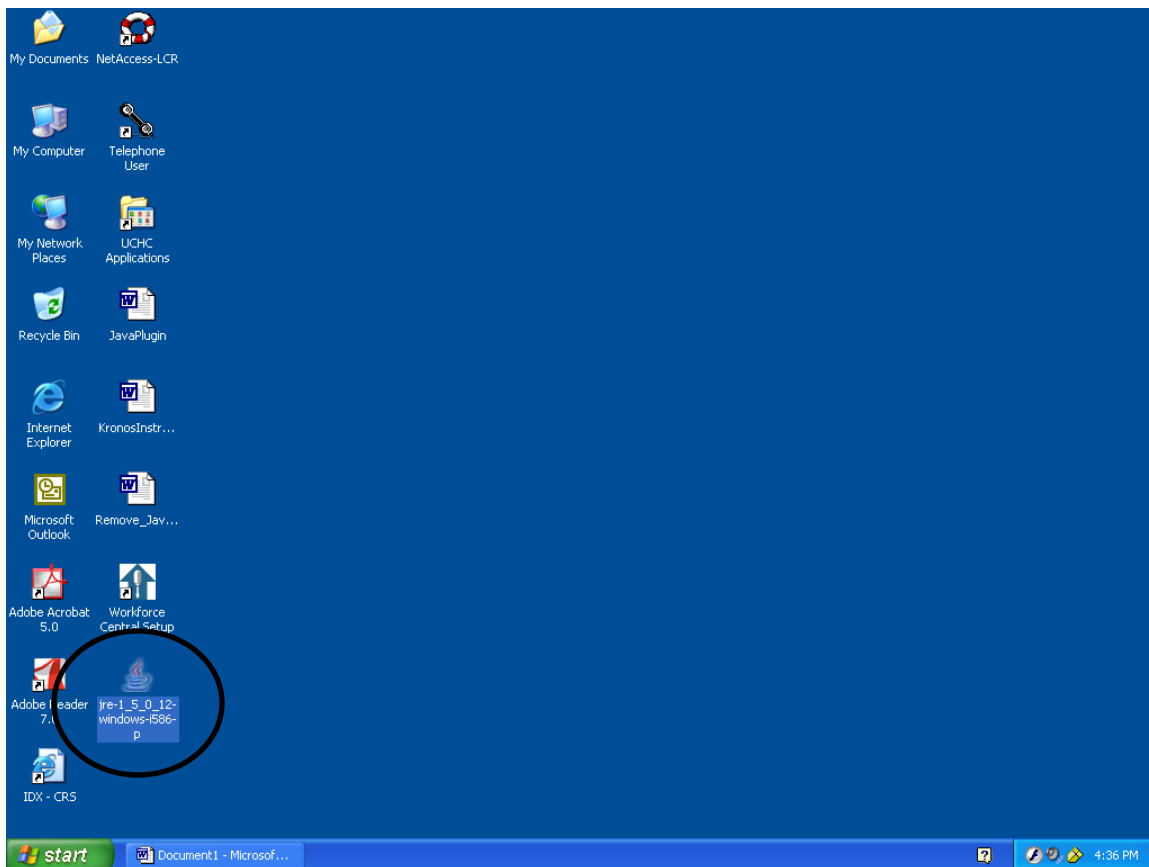
3. Click circled **arrow**, choose **Desktop**, and click **Save**.



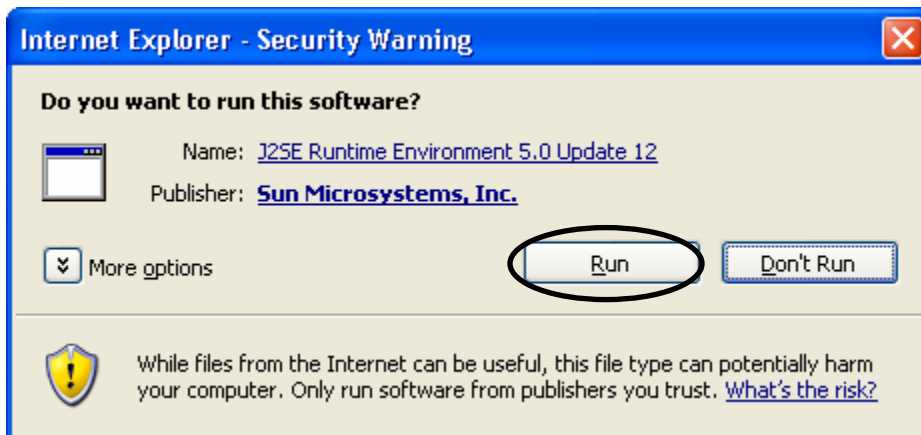
4. Click **Close**.



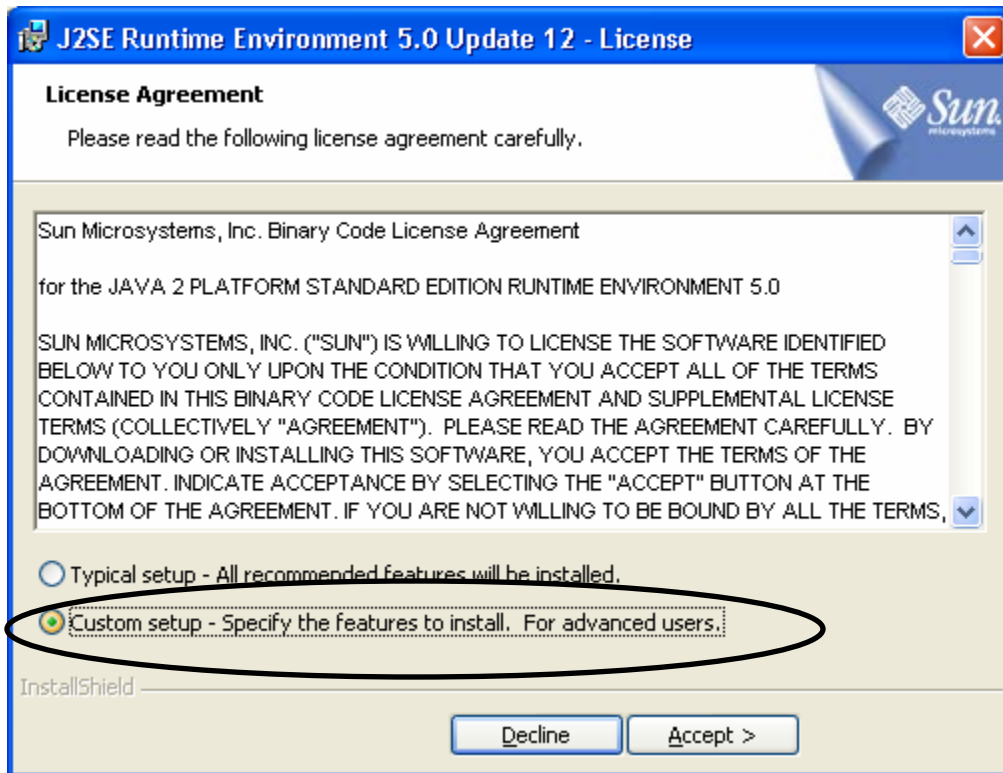
5. Go to desktop and double click **jre-1_5_0_12-windows-i586-p.exe** icon below



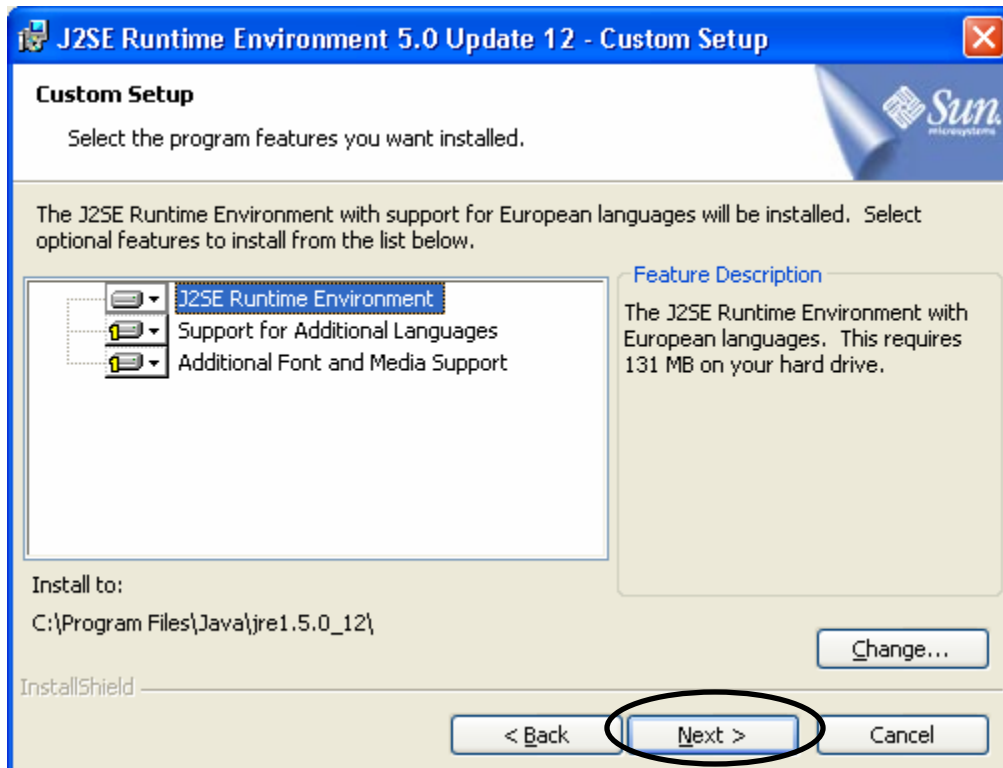
6. Click **Run**



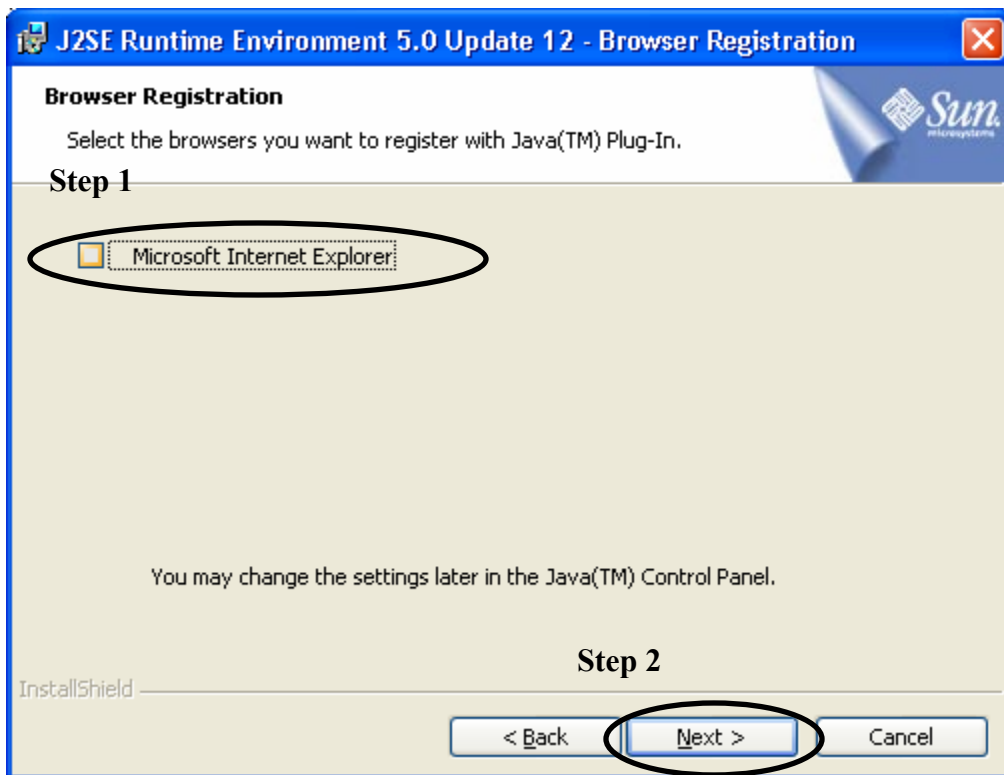
7. Click Custom Setup



8. Click Next



9. **Uncheck** Microsoft Internet Explorer and click **Next**



10. Click **Finish**



Finished. Log into Kronos.